

type number:

**STS\_S**

product description: This reinforcement is used to prevent the LTS and CTS brackets from distorting when installed.

Use 1 reinforcement when installing the bracket to the wall. With a double-sided installation, use 2 reinforcements back to back.

surface finish:

S - Pre-Galvanized, zinc-layer 15 - 27 µm

sales amount:

á 1 pc

classification :

ČSN 73 0895 P 90-R

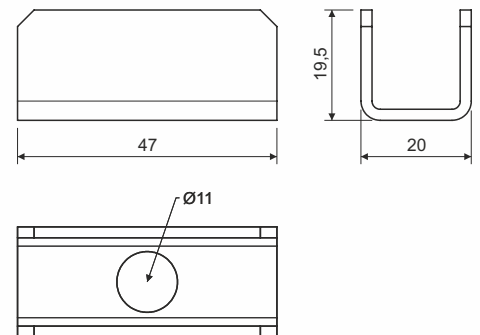
DIN 4102-12 E 90

STN 92 0205 PS 90

Fire classification is depend on the specific conditions of the cable tray, detailed in the catalog Systems with maintained functionality in fire.

storage:

EN 60721-3-1

**WARNING****Risk of injury from cutting**

Although the cable trays are produced with maximum effort to minimize sharper edges, it is necessary to wear protective gloves to carry, grip and work with cable elements.

**Electricity injury**

As individual components of cable management systems are made of electrical conductive material, it is essential not to work with a system near live electrical parts. Infringement of the safety regulations may cause serious injury of health or death.

**Safe Use**

Under normal and foreseeable conditions of use, there are no risks to consumers, provided that proper installation and usage are carried out in accordance with the installation manual.

recycling codes:



STS



cardboard